

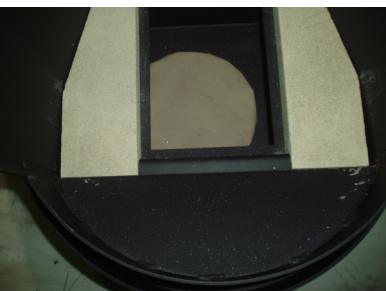
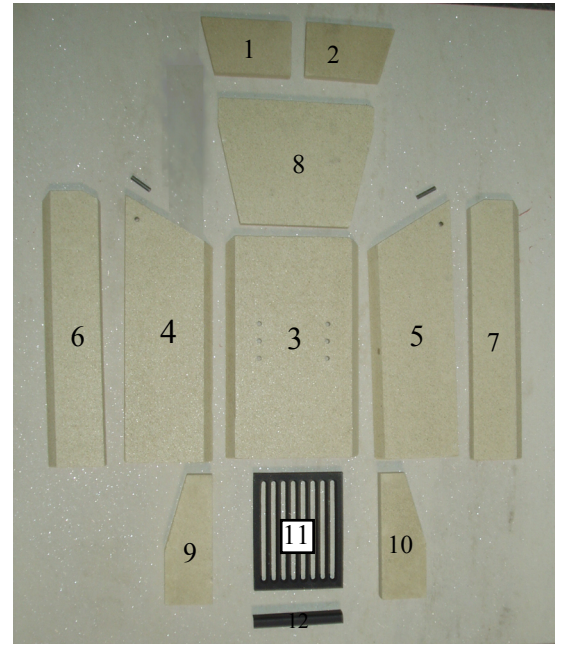


WESTFIRE

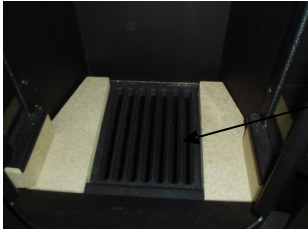
VERMICULITE FIREBRICK INSTALLATION SEQUENCE - UNIQ 26,27,28



- 1 - Top Left Turbulence Brick
- 2 - Top Right Turbulence Brick
- 3 - Rear Brick
- 4 - Left Side Brick
- 5 - Right Side Brick
- 6 - Left Small Side Brick
- 7 - Right Small Side Brick
- 8 - Baffle Brick
- 9 - Left Base Brick
- 10 - Right Base Brick
- 11 - Base Grate
- 12 - Metal Spacer



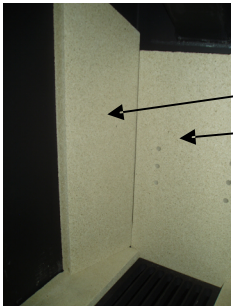
1 - Insert both base bricks (9 and 10) on their respective sides. Then place the Metal spacer (12) inbetween bricks at front with curved edge facing the rear of the chamber.



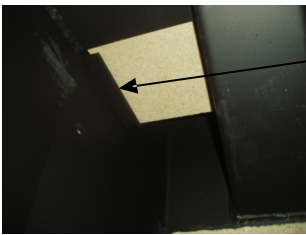
Grate 11 placed between two base bricks.



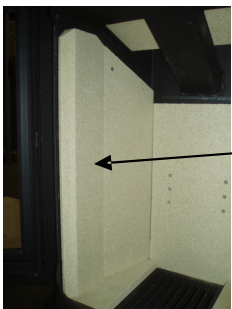
Rear brick (3) fits in space behind two base bricks with edges sloping to the back of stove.



Place both side bricks (4 and 5) with their angled edge matching that of the rear brick so that the two meet flush.



Insert top turbulence bricks (1 and 2) this is done by manoeuvring brick once its above side support panel then placing brick balanced on both support panel and central beam.



Small side panels (6 and 7) are then fitted in front of the main side panels.



Baffle brick is placed with back side sitting on top of rear brick baffle is then held up while metal pins are place in pre drilled holes of side bricks then the baffle is left to settle on these pins.